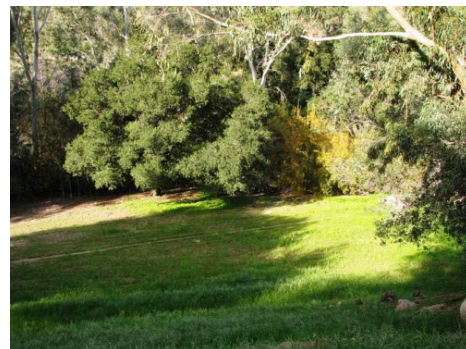


## Your Own Private Shangri-La



\$ 1,995,000



11001 Farralone Ave, Chatsworth, CA 91311

- » Beds: 3 | Baths: 2 Full, 2 Half
- » MLS #: 11500515
- » Single Family | 1,842 ft<sup>2</sup> | Lot: 6.94 acres
- » Country Living within the City
- » 7.5 acres of Usable Land
- » More Info: [11001FarraloneAve.IsForSale.com](http://11001FarraloneAve.IsForSale.com)



Julliann Woods  
DRE lic# 01773371  
(818) 201-4046 (CELL)  
[jewlz329@yahoo.com](mailto:jewlz329@yahoo.com)  
<http://www.mostwontjulliann.com>

Pinnacle Estate Properties  
1855 East Cochran Street  
Suite #104  
Simi Valley, CA 93065

Your Secluded Hide-A-Way minutes from the City. Rare Opportunity for Horse Stable, Retreat Center, Church Space, Special Needs Camp, Estate Subdivision. Amazing property with Beautiful Oak Trees, Fruit Orchards, Dramatic Boulders and tons of Open Space for your own hobbies! Property also includes; Very Neat & Clean Traditional style 3br 2ba Home, Pool, Guest/Maid quarters and the property is zoned for Horses. Truly one of a kind property with lots of opportunity just bring your imagination! Call today for your Private Showing

